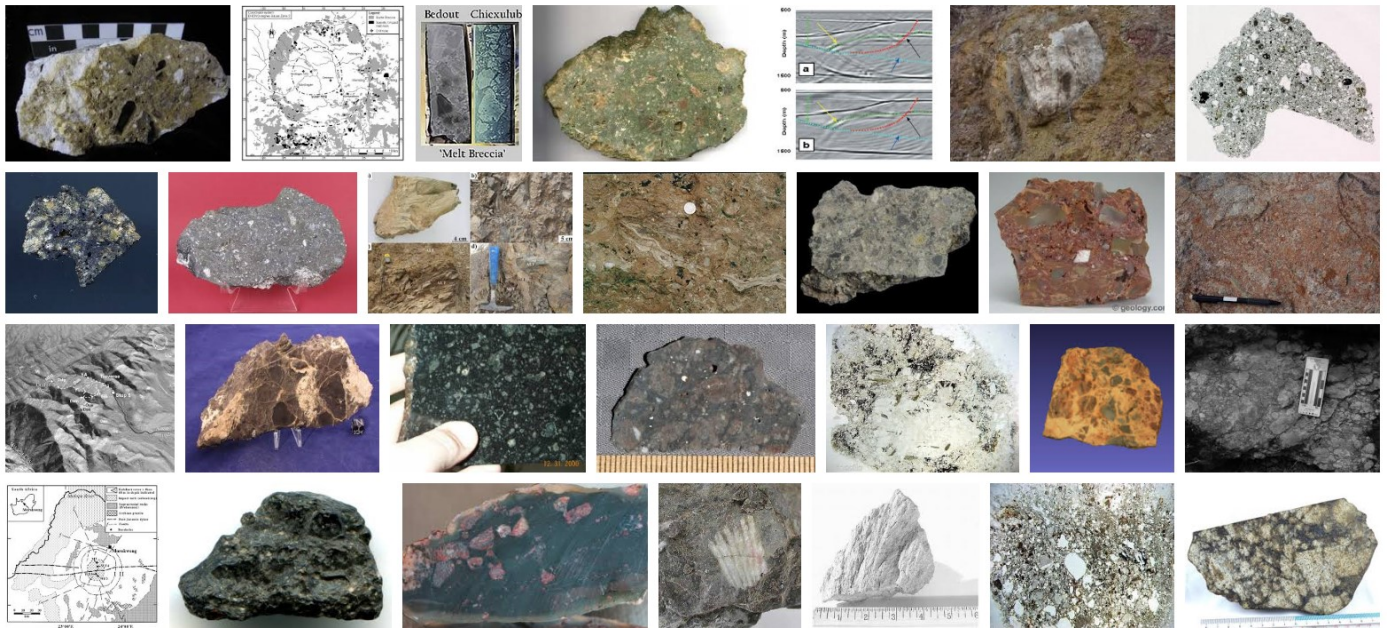


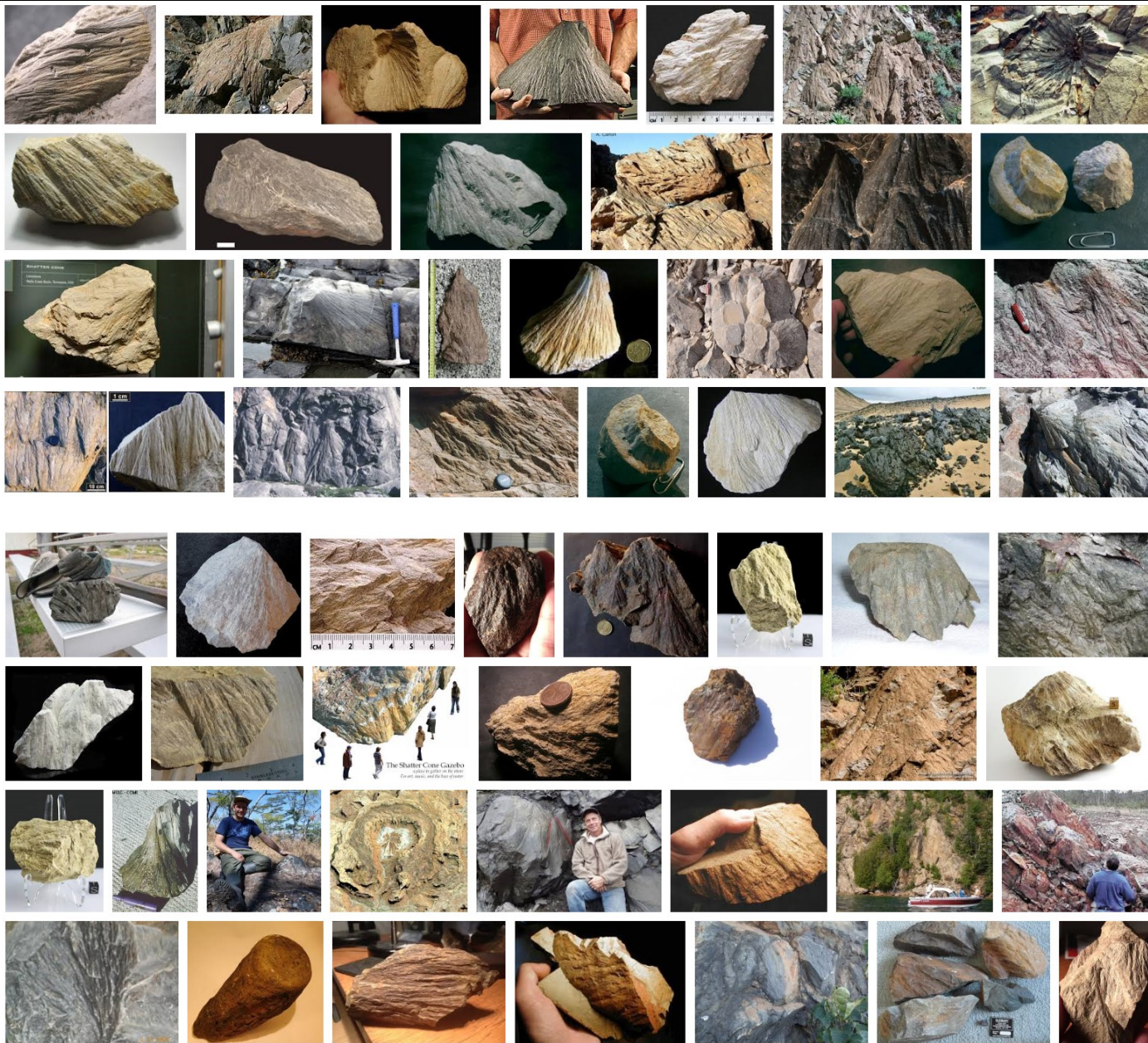
**Impact Breccia** → consists of broken fragments of minerals or rock, cemented together by a fine-grained matrix



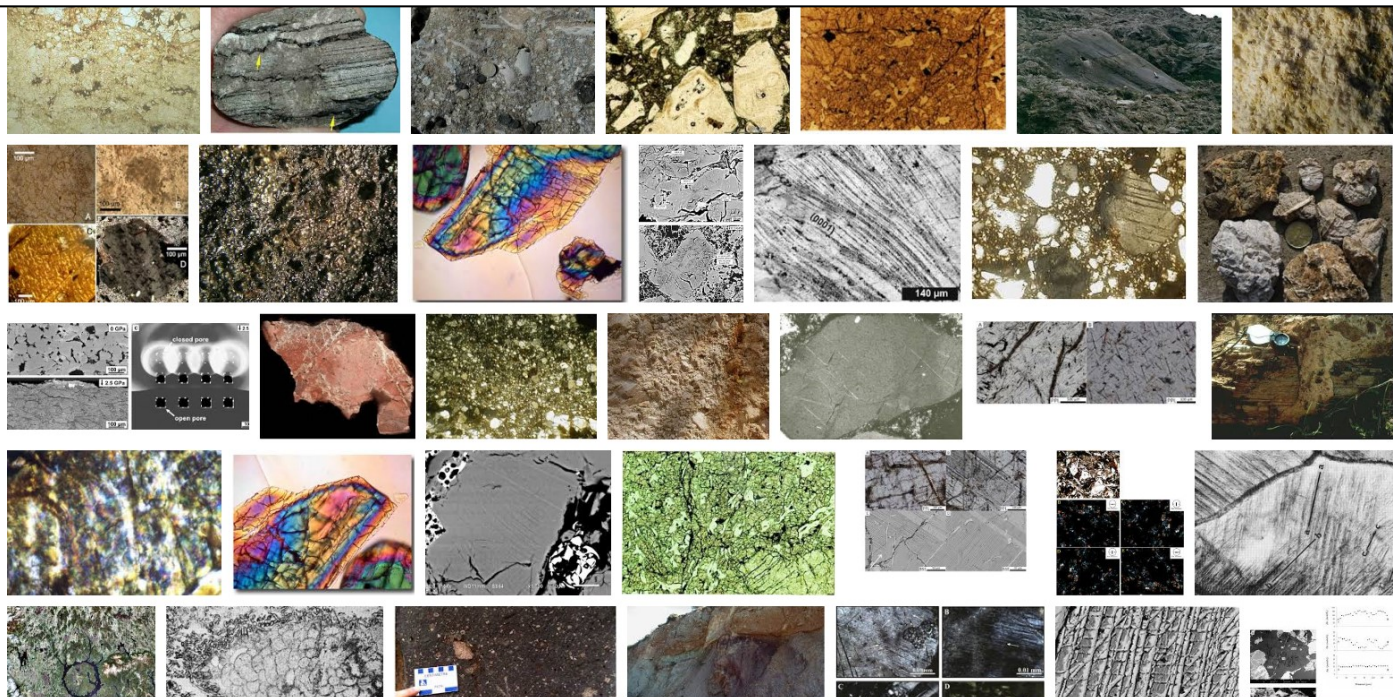
Seite 5



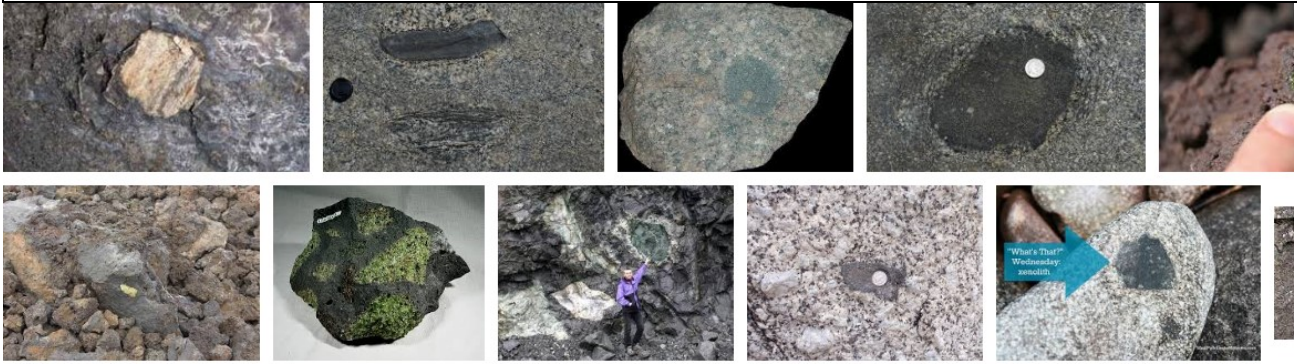
**Shatter cone structures - geological features which form in the (bed)-rock beneath meteorite impact craters**



**Diaplectic glass - forms when the lattice structure of a crystal is destroyed by the extreme pressure from an impact**



**Xenoliths** - most of the time a Xenolith was a rock embedded in magma ( or ejecta ! ) while it was cooling



Seite 2



Seite 3

