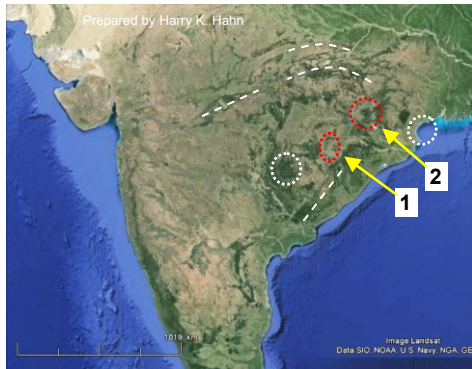


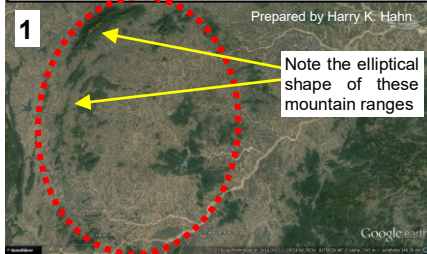
Other possible Impact Structures in India & South-America which probably were caused by the PT – Impact Event :

There are other impact structures on Earth which are indicated by topographic features and visible on satellite images (e.g. in Google Earth). I want to show here a few possible impact structures, which are a bit more difficult to interpret. There are some further structures visible in India which seem to be secondary impact structures caused by the Bengal Bay Crater. And there are also further impact structures visible in South-America which seem to be connected to the **PT-Impact**

Other impact structures in India

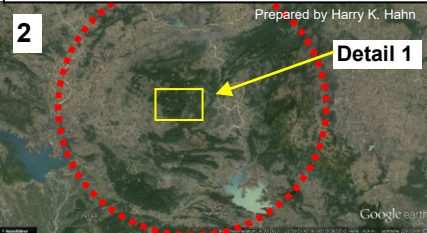


20°26'04.78" N – 83°59'20.40" E



elliptical structure with \varnothing 90x65 km

21°59'57.45" N – 85°35'58.53"



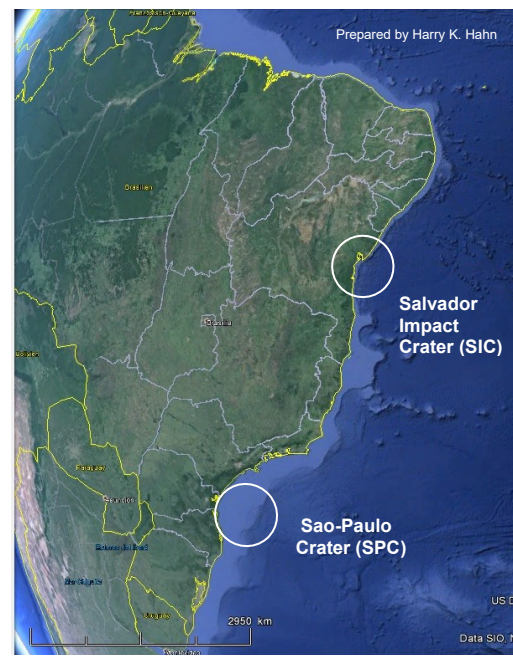
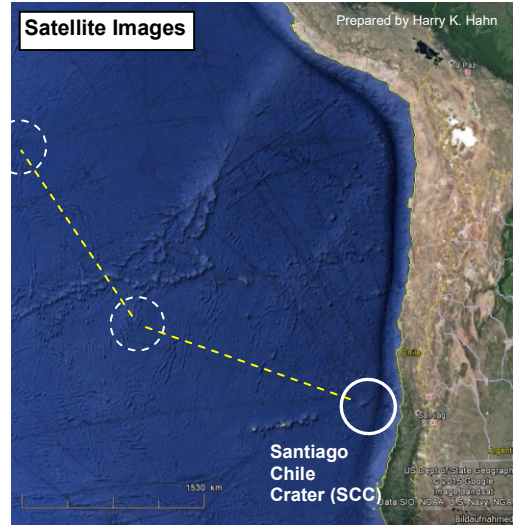
circular structure with $\sim \varnothing$ 100 km

Detail 1



Further impact structures in South-America :

There are two possible impact craters located in two bay-areas on the East-Coast of South-America and one crater on the West-Coast which may also be a secondary crater caused by the **PT-Impact Event** ~ 253 Ma ago.



The Gravity Anomaly Map of South-America shows finer structures which indicate two further impact craters in the **300-600 km** diameter range on the East-Coast, and at least one impact-crater or -zone just west of the West-Coast of Chile, which seems to be connected to two structures on the ocean floor (→ the two structures are indicated by white dotted circles).

These structures seem to be traces of two "stops" of this crater (?) or impact-zone in the past, during the ocean floor spreading . Possibly these structures show traces of two magma outbreaks coming from this crater or impact zone, within the last 100 Ma, similar to the traces of Cape York Crater.

The two assumed impact craters on the east coast of South-America, close to Salvador and Sao Paulo (Curitiba) seem to be (at least partly) responsible for the shape of the east-coast of South-America & the breakup of Gondwana. The Salvador Impact Crater (SIC) may belong to the Ejecta-Ray R3 from the PTI. The Sao Paulo Crater could be caused by ejecta from the PTI or by ejecta from the VI C event

