

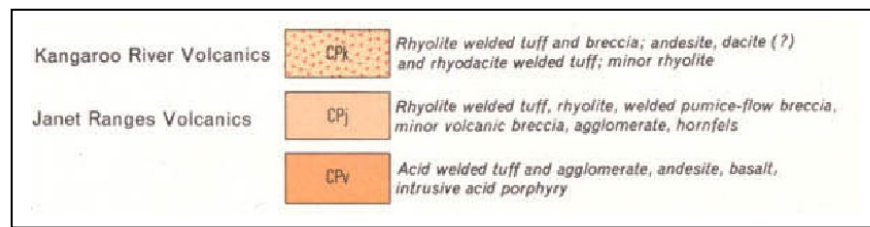
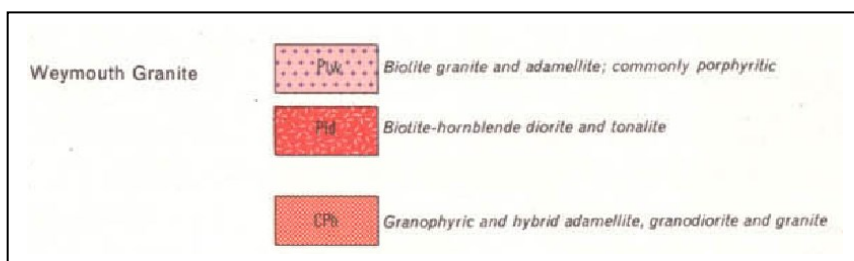
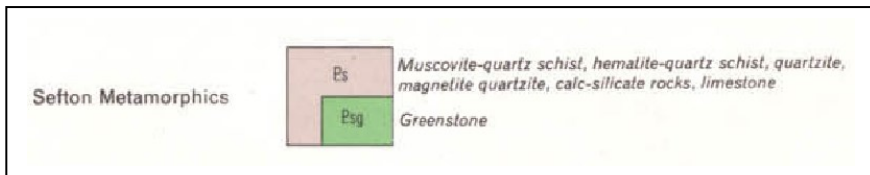
List of individual geological maps of shown map combination, with some selected interesting rock types :

→ All Geological maps can be downloaded at : <http://www.geoscience.gov.au/> → Then go to “Geology“ – 1:250K Geological Maps

Map 1 : CAPE WEYMOUTH : (IRON RANGE)

Weblink :

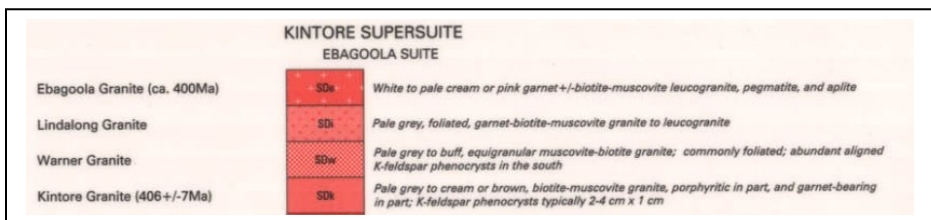
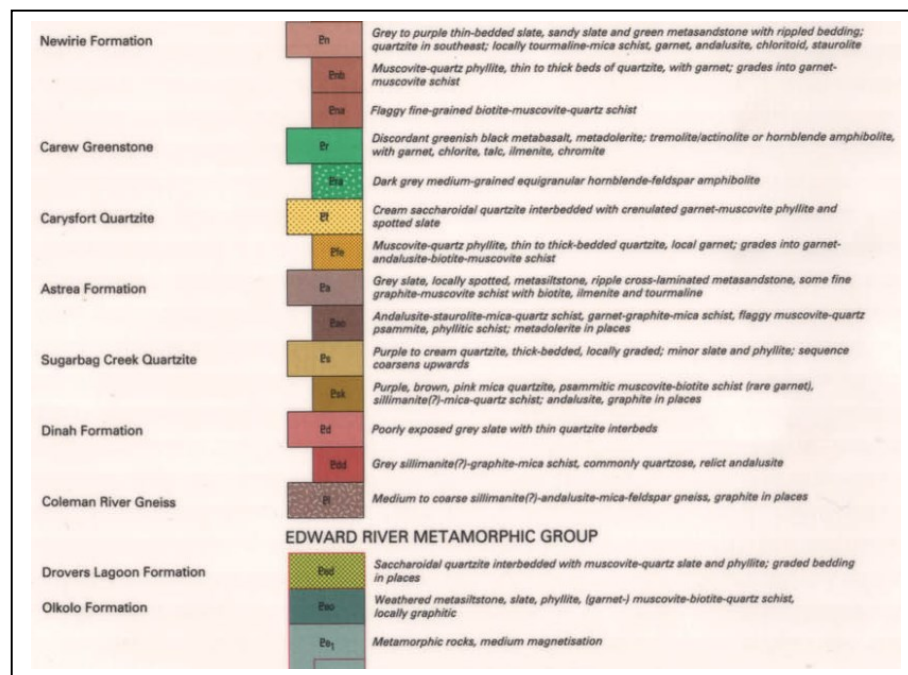
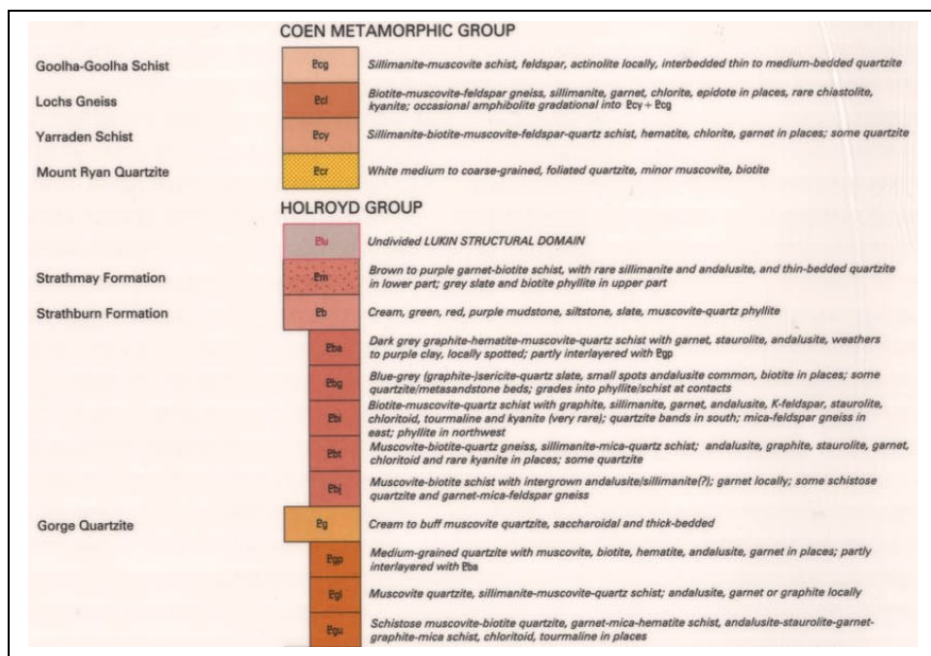
http://www.geoscience.gov.au/cgi-bin/mapserv?mapsize=450+450&mapext=-220000.00000+-525000.00000+210000.00000+-95000.00000&map=%2Fnas%2Fweb%2Fops%2Fprod%2Fapps_www-c%2Fmapserv%2Fgeoportal-geologicalmaps%2Findex.map&mode=itemquery&layer=map250&qitem=qmapname&map_map250_query_template=sheetindex.html&qstring=%2FCAPE+WEYMOUTH%2F



Map 3 : EBAGOOLA :

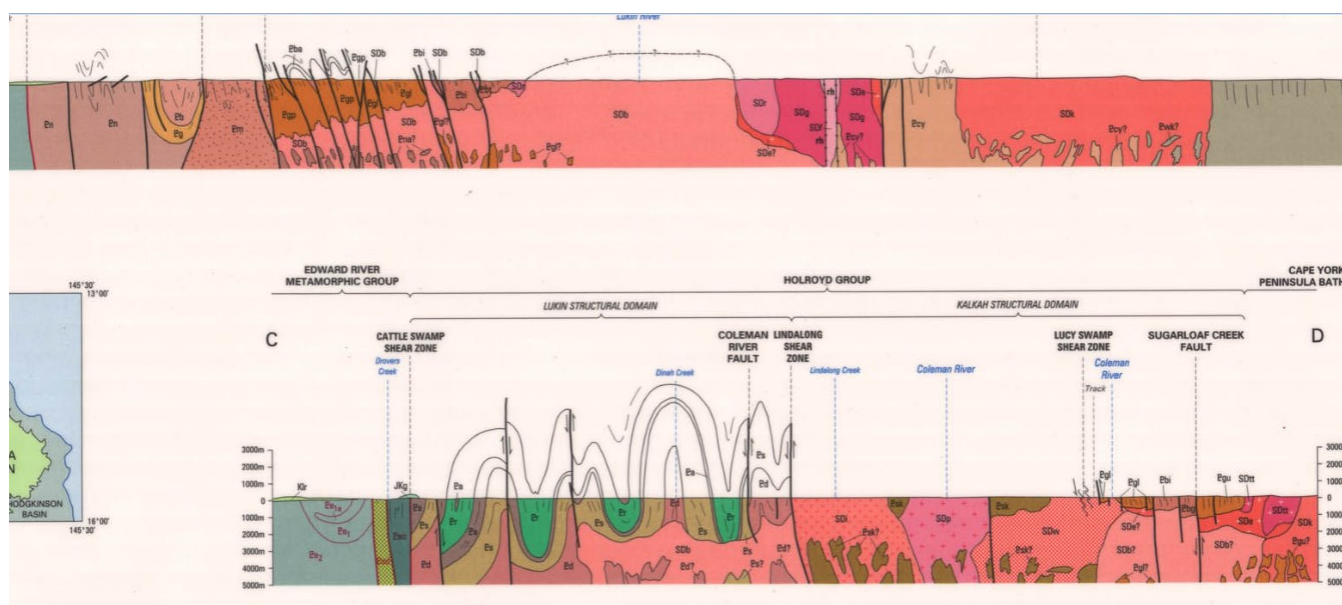
Weblink :

http://www.geoscience.gov.au/cgi-bin/mapserv?mapsize=450+450&mapext=-220000.00000+-525000.00000+210000.00000+-95000.00000&map=%2Fnas%2Fweb%2Fops%2Fprod%2Fapps_www-c%2Fmapserv%2Fgeoportal-geologicalmaps%2Findex.map&mode=itemquery&layer=map250&qitem=qmapname&map_map250_query_template=sheetindex.html&qstring=%2FEBAGOOLA%2F



Please have a look at the cross-section of Map 3 !! :

→ This section view looks like the (half) cross-section through a very large Impact Crater !! (with the help of the curved nearly vertical cracks on the lefthand side one can get a feeling for the gigantic scale of the possible Impact !)



Map 6 : COOKTOWN :

Weblink :

http://www.geoscience.gov.au/cgi-bin/mapserver?mapsize=450+450&mapext=-220000.00000+525000.00000+210000.00000+-95000.00000&map=%2Fnas%2Fweb%2Fops%2Fprod%2Fapps_www-c%2Fmapserver%2Fgeoportal-geologicalmaps%2Findex.map&mode=itemquery&layer=map250&qlayer=map250&qitem=qmapname&map_map250_query_template=sheetindex.html&qstring=%2FCOOKTOWN%2F

TERTIARY TO QUATERNARY	
Piebald Basalt	TQp Olivine nephelinite, minor olivine basanite and hawaiite, minor fine to coarse pyroclastic deposits
	TQp Fine to coarse pyroclastic deposits, minor interbedded mafic lava: vent and near-vent deposits
	TQl Olivine basanite and hawaiite, minor olivine tholeiite, nephelinite, minor fine to coarse pyroclastic deposits
	TQl Fine to coarse pyroclastic deposits, minor interbedded mafic lava: vent and near-vent deposits
McIvor River Basalt	TQd Nodular and massive ferricrete: ferruginous duricrust
	TQf Mud, sand, and gravel, and locally blocks of Mesozoic sandstone; can be mottled and locally ferruginised: older, high-level, alluvial, fan and talus deposits
	Ts Sand, mud, gravel: undifferentiated, generally mottled and locally ferruginised sediment
TERTIARY	
McLean Basalt	Tm Vesicular, amygdaloidal and massive analcime, nepheline and olivine-bearing basalt lava flows locally with lherzolite inclusions, minor coarse pyroclastic deposits
	Tm Fine to coarse pyroclastic deposits, minor interbedded mafic lava: vent and near-vent deposits
	Ts Sand, mud, gravel: undifferentiated, generally mottled and locally ferruginised sediment

Mount Poverty Granite	Pgcp	Mainly white to pale brown, medium-grained, seriate to moderately porphyritic biotite granite; locally extensively deformed; minor greisen
Boobun Granite	Pgcb	Grey, medium-grained, porphyritic (tourmaline-) biotite granite; commonly intensely deformed; minor grey, fine to medium-grained, mainly equigranular (tourmaline-) (muscovite-) biotite granite
Mount Hartley Granite	Pgch	Grey, fine-grained, coarsely porphyritic biotite granite
Finlayson Granite	Pgcf	Mainly pale brown to pale grey and white, fine to medium-grained, porphyritic cordierite-biotite granite; minor fine-grained, porphyritic granite, greisen, minor fine-grained porphyritic granite, minor quartz-feldspar aplite
	Pgcf _{sq}	Mainly fine-grained, porphyritic granite, minor greisen
Mount Finnigan Granite	Pgfi	Pale brown to pale grey, fine-grained, moderately to strongly porphyritic cordierite-biotite granite; contains sparse high-grade gneissic metasedimentary enclaves
Cooktown Granite	Pgoc	White to pale grey, sparsely porphyritic to equigranular (cordierite-) (tourmaline-) muscovite-biotite granite
Charlotte Granite (275 ± 5 Ma)	Pgcl	Pale grey to white, moderately to sparsely porphyritic, (garnet-) (cordierite-) (tourmaline-) muscovite-biotite granite
Finch Bay Granite	Pgcn	Pale grey, moderately porphyritic (cordierite-) (tourmaline-) muscovite-biotite granite; xenoliths common

Map 8 : MOSSMAN :

Weblink :

http://www.geoscience.gov.au/cgi-bin/mapserver?mapsize=450+450&mapext=-220000.00000+525000.00000+210000.00000+-95000.00000&map=%2Fnas%2Fweb%2Fops%2Fprod%2Fapps_www-c%2Fmapserver%2Fgeoportal-geologicalmaps%2Findex.map&mode=itemquery&layer=map250&qlayer=map250&qitem=qmapname&map_map250_query_template=sheetindex.html&qstring=%2FMOSSMAN%2F

	Cv	Mainly volcanic tuff and breccia; minor argillaceous siltstone
Nulbullulul Granite	Pgu	White to pale grey, fine to medium-grained, slightly porphyritic hornblende-biotite granite; with sparse enclaves (to 1m) of hornblende-biotite microgranite
Whypalla Supersuite granites	Pgw ₁₋₁₆	Mainly fine to coarse-grained, even-grained to highly porphyritic (garnet-tourmaline) muscovite-biotite granite; minor fine to medium-grained, even-grained (garnet-) two-mica granite; rare highly porphyritic hypersthene-augite-garnet-biotite granite to granodiorite

Map 9 : CAIRNS :

Weblink:

http://www.geoscience.gov.au/cgi-bin/mapserver?mapsize=450+450&mapext=-220000.00000+525000.00000+210000.00000+-95000.00000&map=%2Fnas%2Fweb%2Fops%2Fprod%2Fapps_www-c%2Fmapserver%2Fgeoportal-geologicalmaps%2Findex.map&mode=itemquery&layer=map250&qlayer=map250&qitem=qmapname&map_map250_query_template=sheetindex.html&qstring=%2FCAIRNS%2F

Mareeba Granite	Pgm	Coarse grey biotite granite, usually contains muscovite, tourmaline-rich in places
Barron River Metamorphics	Pzb	Slate, phyllite, quartzite, chert, greywacke (Metamorphic equivalent of the Hodgkinson Formation)
		Main conglomerate lenses Main areas of greenstone

Here the weblinks of the other geological Maps :

Map 2 : COEN :

http://www.geoscience.gov.au/cgi-bin/mapserver?mapsize=450+450&mapext=-220000.00000+525000.00000+210000.00000+-95000.00000&map=%2Fnas%2Fweb%2Fops%2Fprod%2Fapps_www-c%2Fmapserver%2Fgeoportal-geologicalmaps%2Findex.map&mode=itemquery&layer=map250&qlayer=map250&qitem=qmapname&map_map250_query_template=sheetindex.html&qstring=%2FCOEN%2F

Map 4 : CAPE MELVILLE :

http://www.geoscience.gov.au/cgi-bin/mapserver?mapsize=450+450&mapext=-220000.00000+525000.00000+210000.00000+-95000.00000&map=%2Fnas%2Fweb%2Fops%2Fprod%2Fapps_www-c%2Fmapserver%2Fgeoportal-geologicalmaps%2Findex.map&mode=itemquery&layer=map250&qlayer=map250&qitem=qmapname&map_map250_query_template=sheetindex.html&qstring=%2FCAPE+MELVILLE%2F

Map 5 : HANN RIVER :

http://www.geoscience.gov.au/cgi-bin/mapserver?mapsize=450+450&mapext=-220000.00000+525000.00000+210000.00000+-95000.00000&map=%2Fnas%2Fweb%2Fops%2Fprod%2Fapps_www-c%2Fmapserver%2Fgeoportal-geologicalmaps%2Findex.map&mode=itemquery&layer=map250&qlayer=map250&qitem=qmapname&map_map250_query_template=sheetindex.html&qstring=%2FHANN+RIVER%2F

Map 7 : WALSH :

http://www.geoscience.gov.au/cgi-bin/mapserver?mapsize=450+450&mapext=-220000.00000+525000.00000+210000.00000+-95000.00000&map=%2Fnas%2Fweb%2Fops%2Fprod%2Fapps_www-c%2Fmapserver%2Fgeoportal-geologicalmaps%2Findex.map&mode=itemquery&layer=map250&qlayer=map250&qitem=qmapname&map_map250_query_template=sheetindex.html&qstring=%2FWALSH%2F

Other geological Maps from Australia can be downloaded here :

http://www.geoscience.gov.au/cgi-bin/mapserver?zoomdir=0&mode=brows&zoomdir=0&map=%2Fnas%2Fweb%2Fops%2Fprod%2Fapps_www-c%2Fmapserver%2Fgeoportal-geologicalmaps%2Findex.map&layer=map250&zoomsize=2&mapsize=450+450&imgx=225.0+225.0&imgy=742483.296214+-1767622.494434+1279983.296214+-1230122.494434&img_x=352&img_y=211