

Overview of area where samples where collected :

SPAIN (3rd-trip) – southern area

Geological Map of southern Spain with marked area where rock samples where collected :

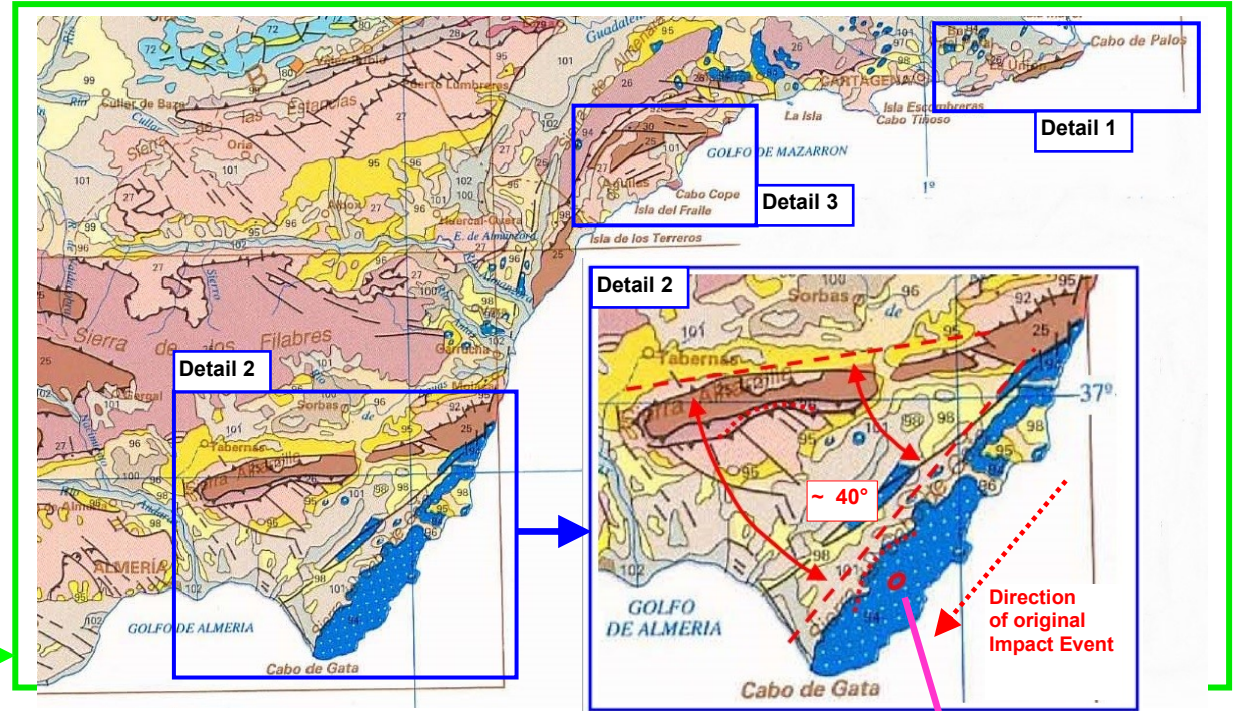
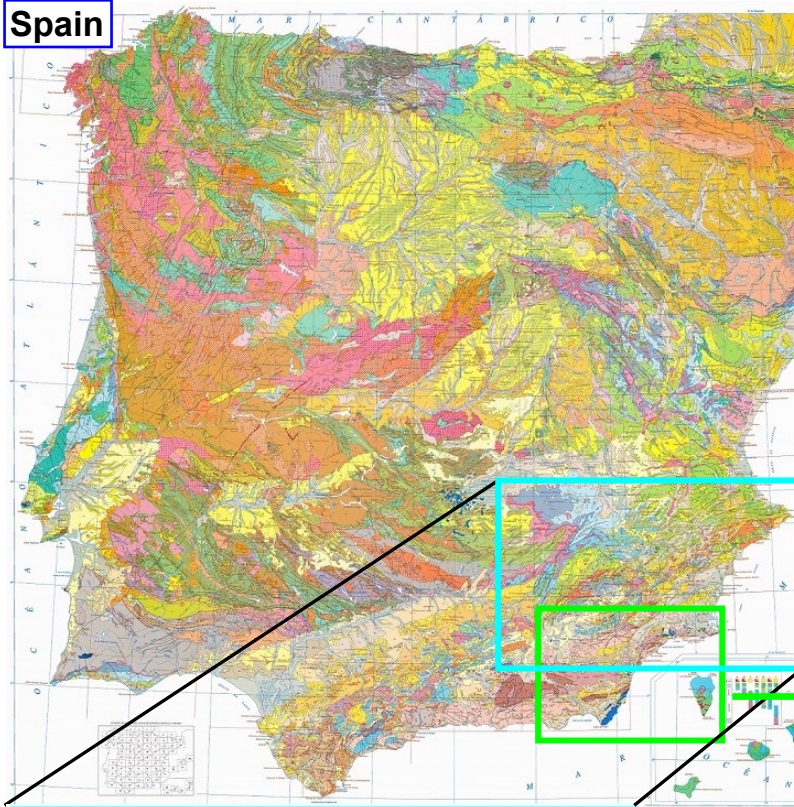
Position of assumed Impact Structures marked on the map :

→ Weblink to the Geological Map of Spain :

<http://www.zonu.com/fullsize-en/2010-09-01-12020/Geological-map-of-Spain-1994.html>

Spain (southern area)

→ Geological Map of selected area

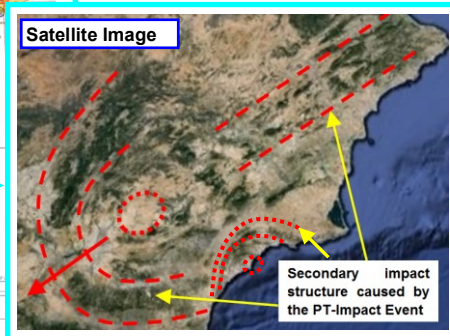
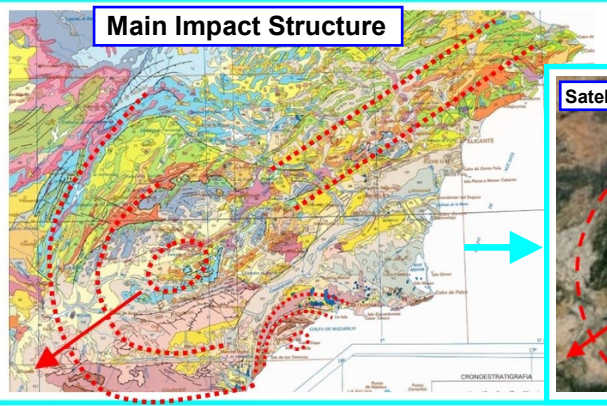
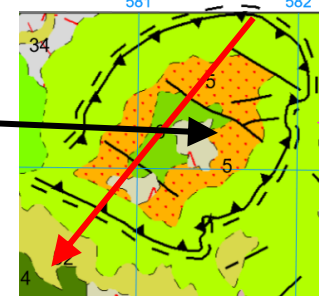
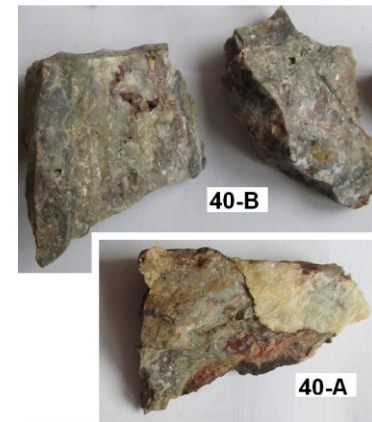


Impact-Breccia found in Crater Center

Geological Maps of Impact Crater :

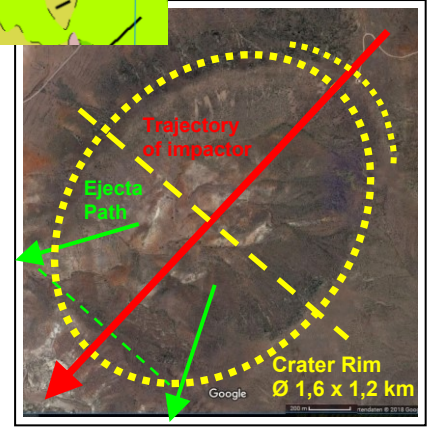
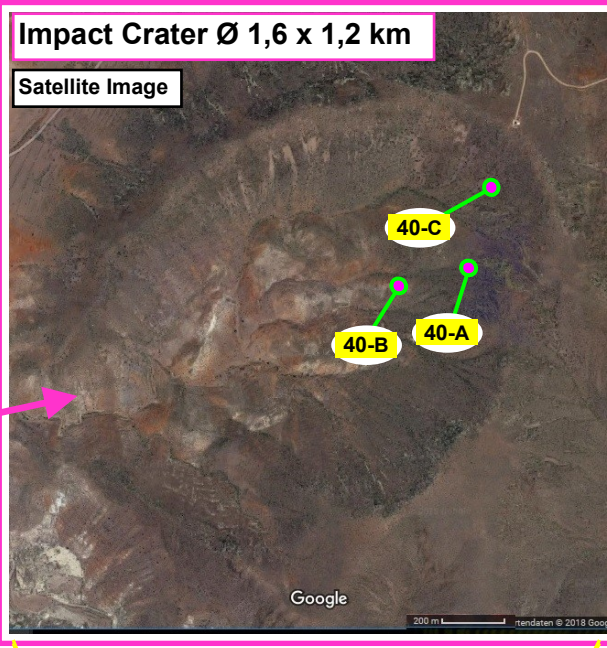
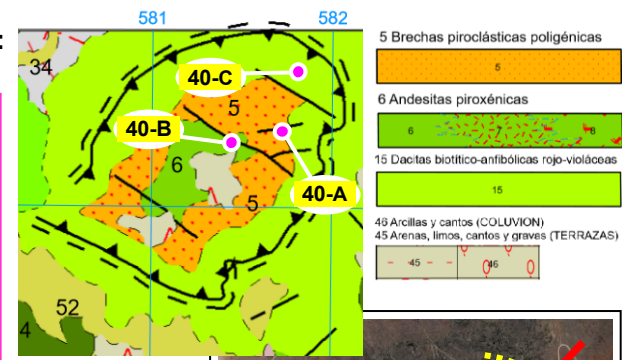
Weblink_maps :
 → [Geological Map IGME arcgis](#)
[Geological Map Magna50](#)

Impact Crater (elliptical) Ø 1,6 x 1,2 km

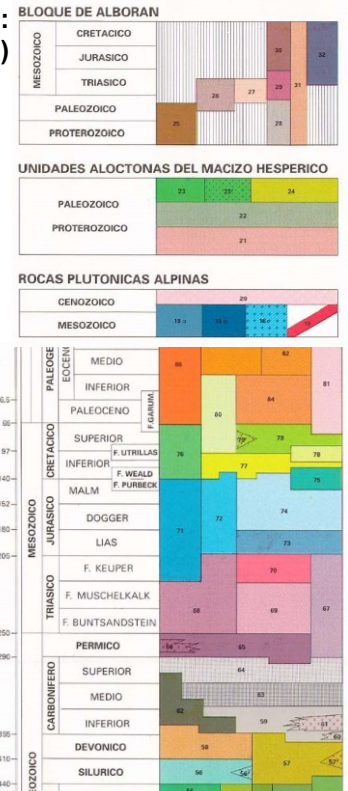


→ map details of selected area :

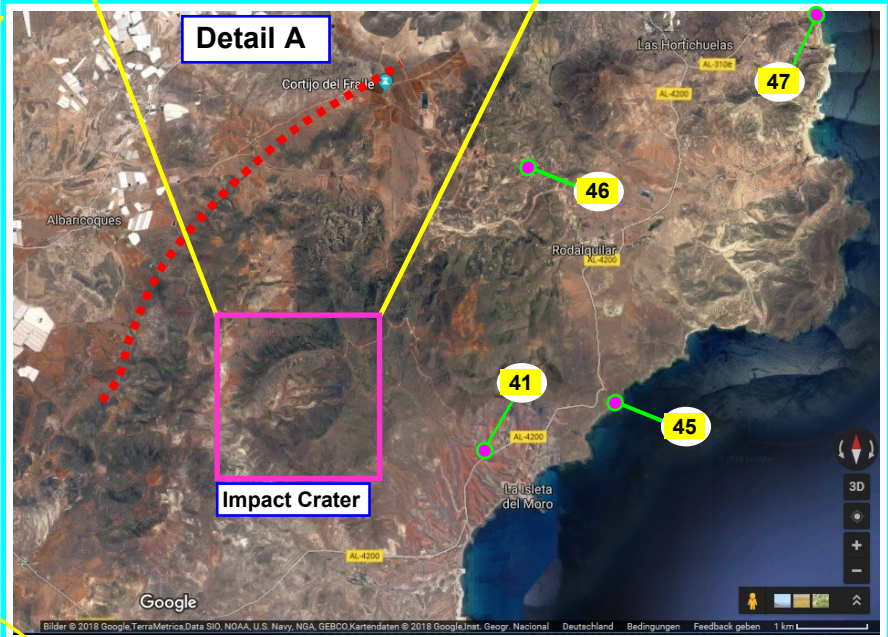
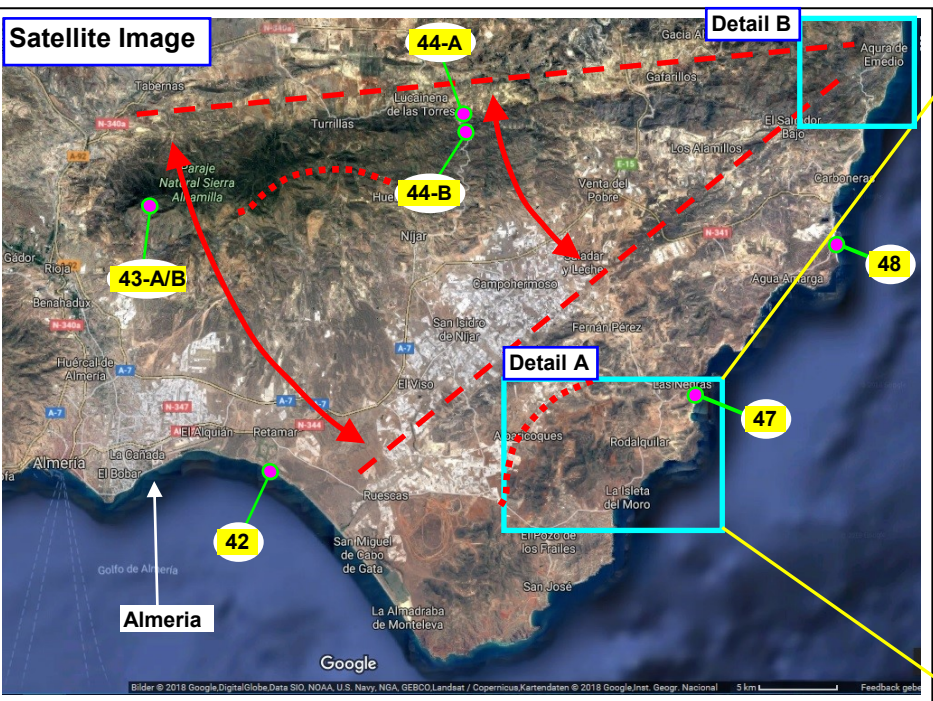
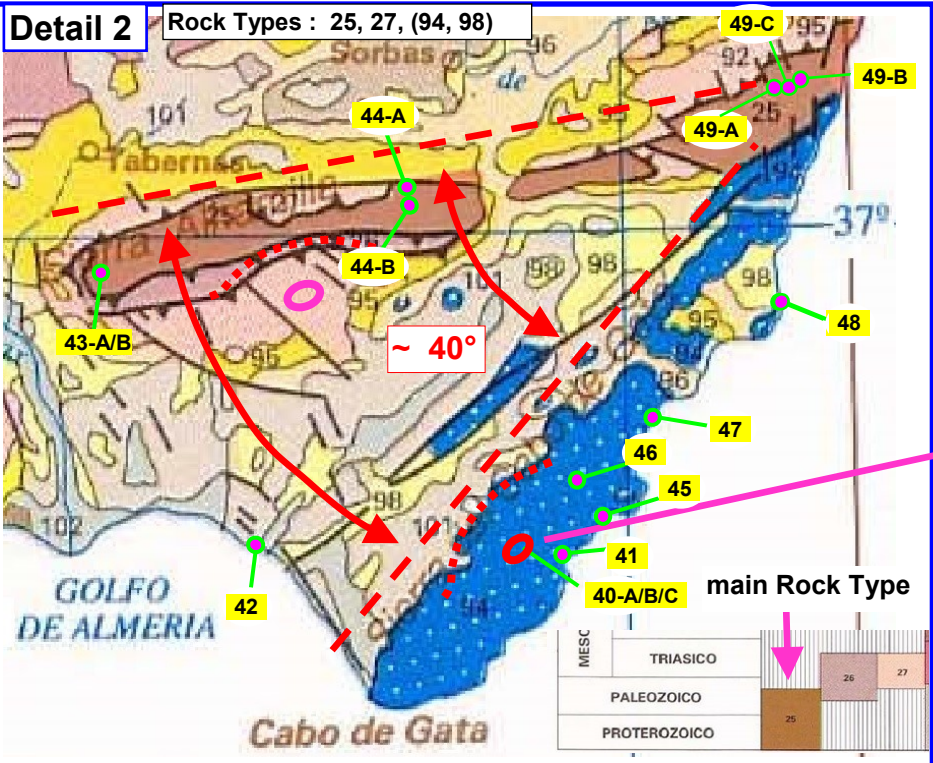
Geological Map :
of Impact Crater



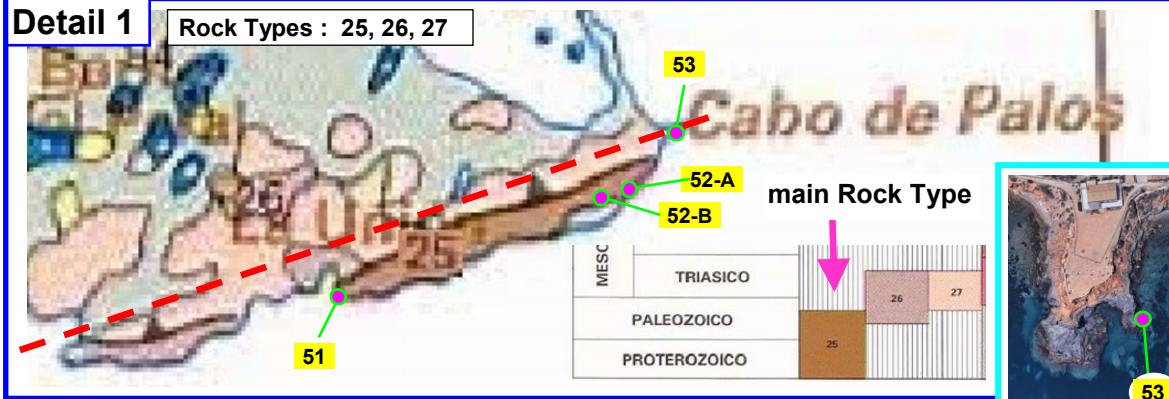
LEGEND :
(Rock Types)



Sample sites No : 40 to 50
marked in yellow on the maps

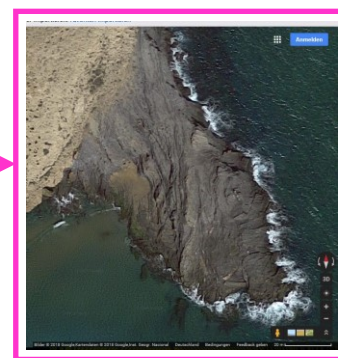
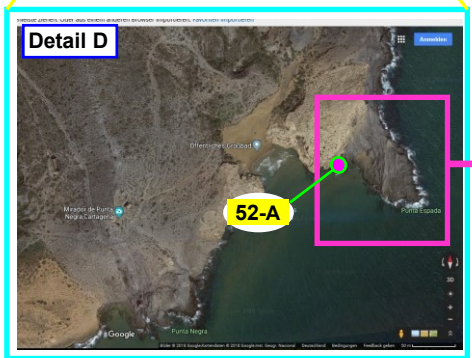
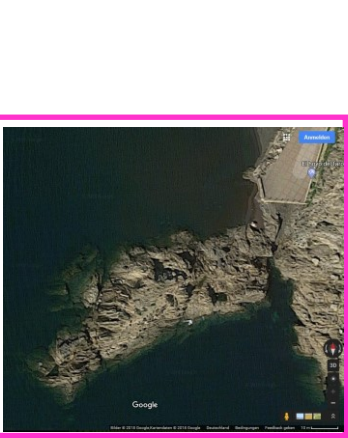
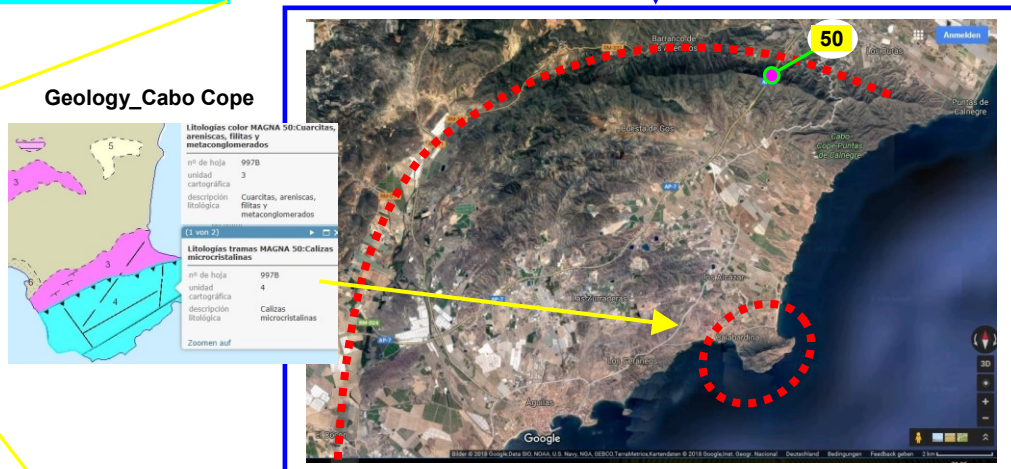
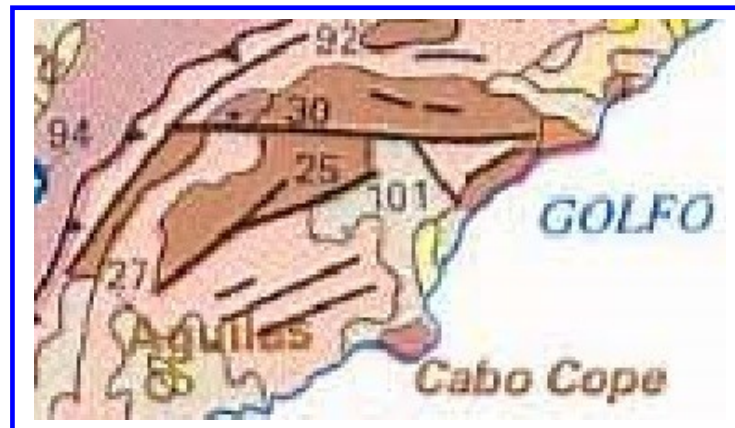


Detail 1 Rock Types : 25, 26, 27



Sample sites
No : 40 to 50
marked in yellow
on the maps

Sample from Crater-Wall structure :



Detail B from previous page :

