

GERALDTON

Overview of areas where samples were collected :

Geological Map of Western Australia with marked areas where rock samples were collected :

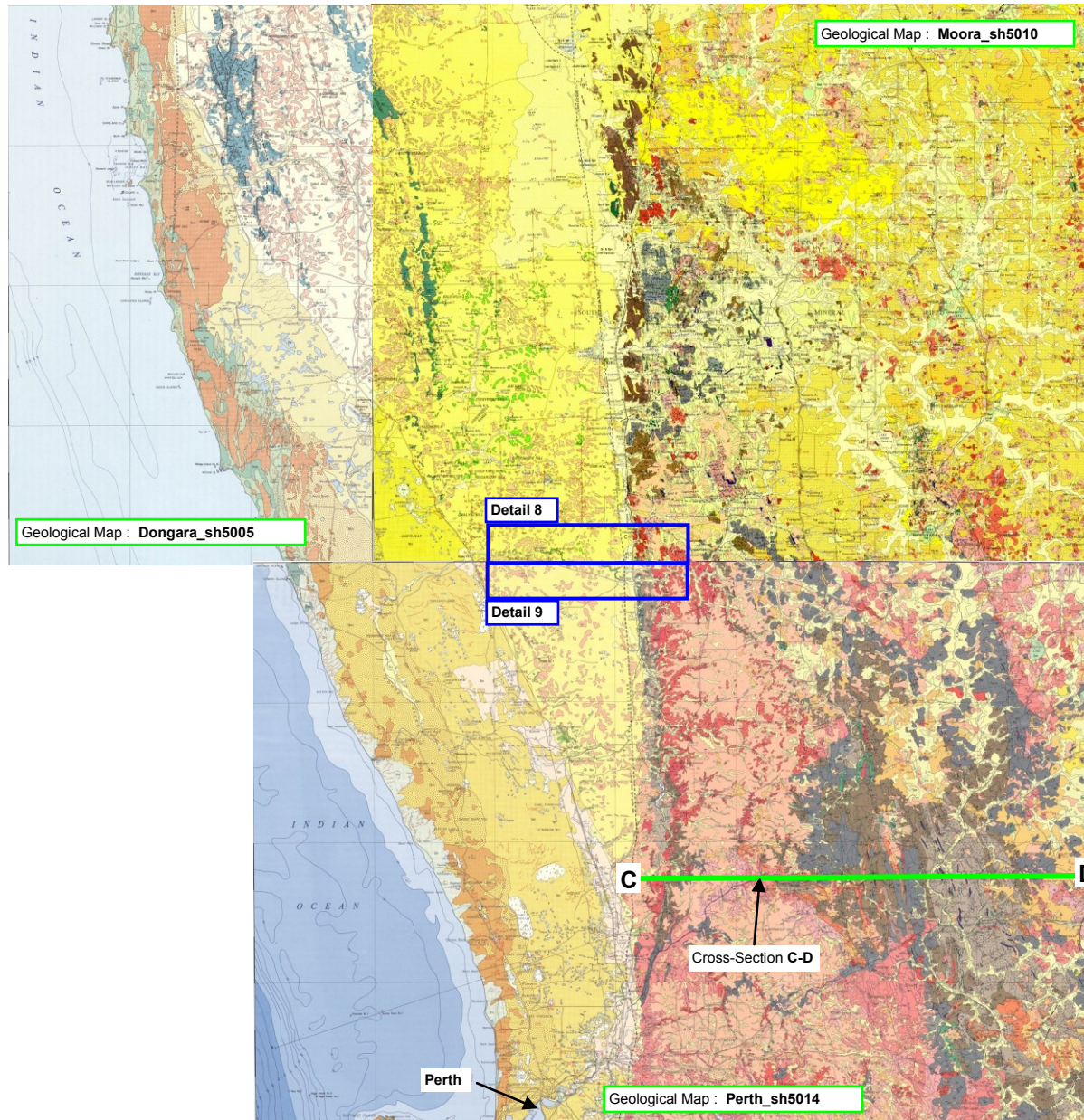


Geraldton area

South Geraldton area

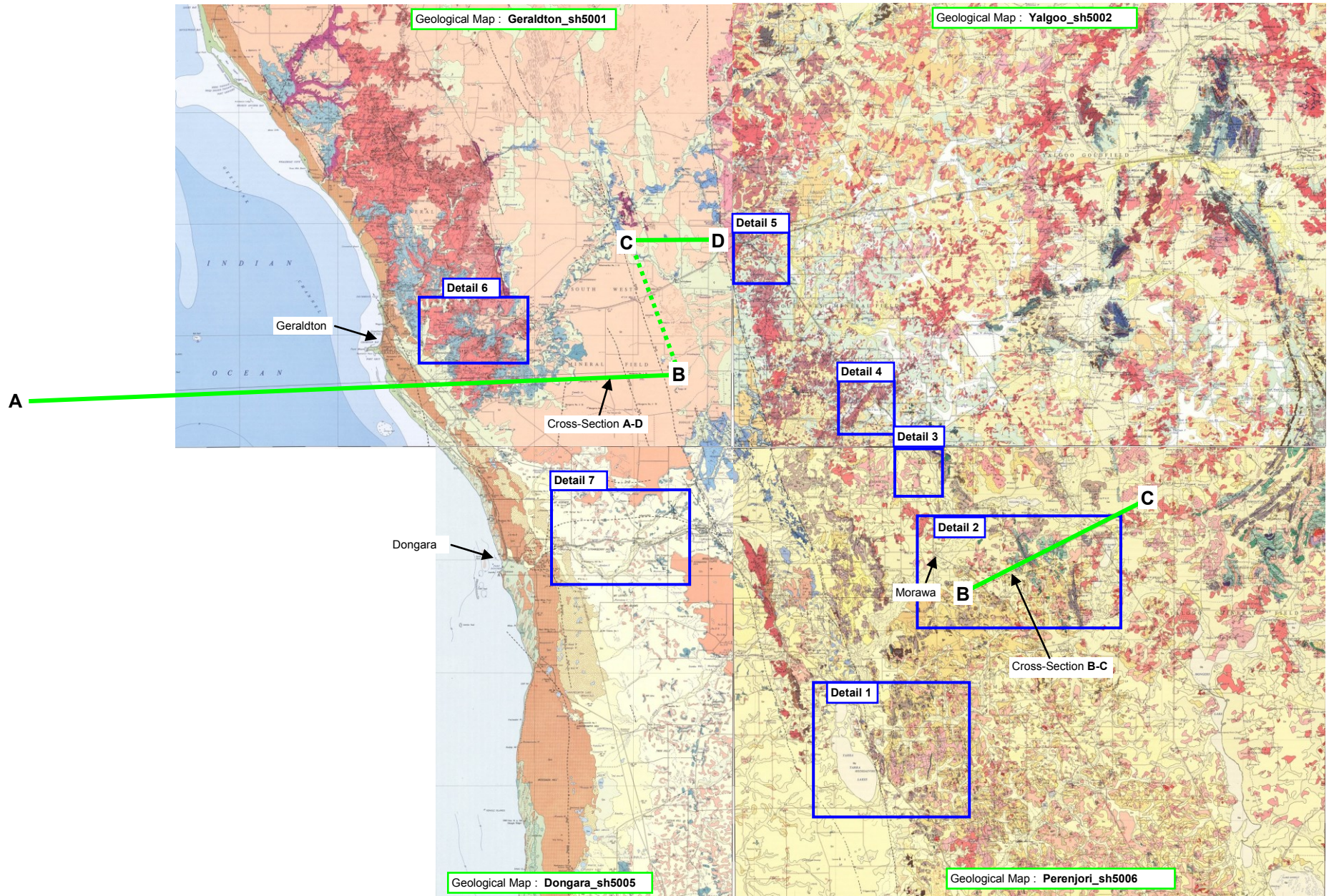
South Geraldton area

→ 3 Geological Maps joined together :



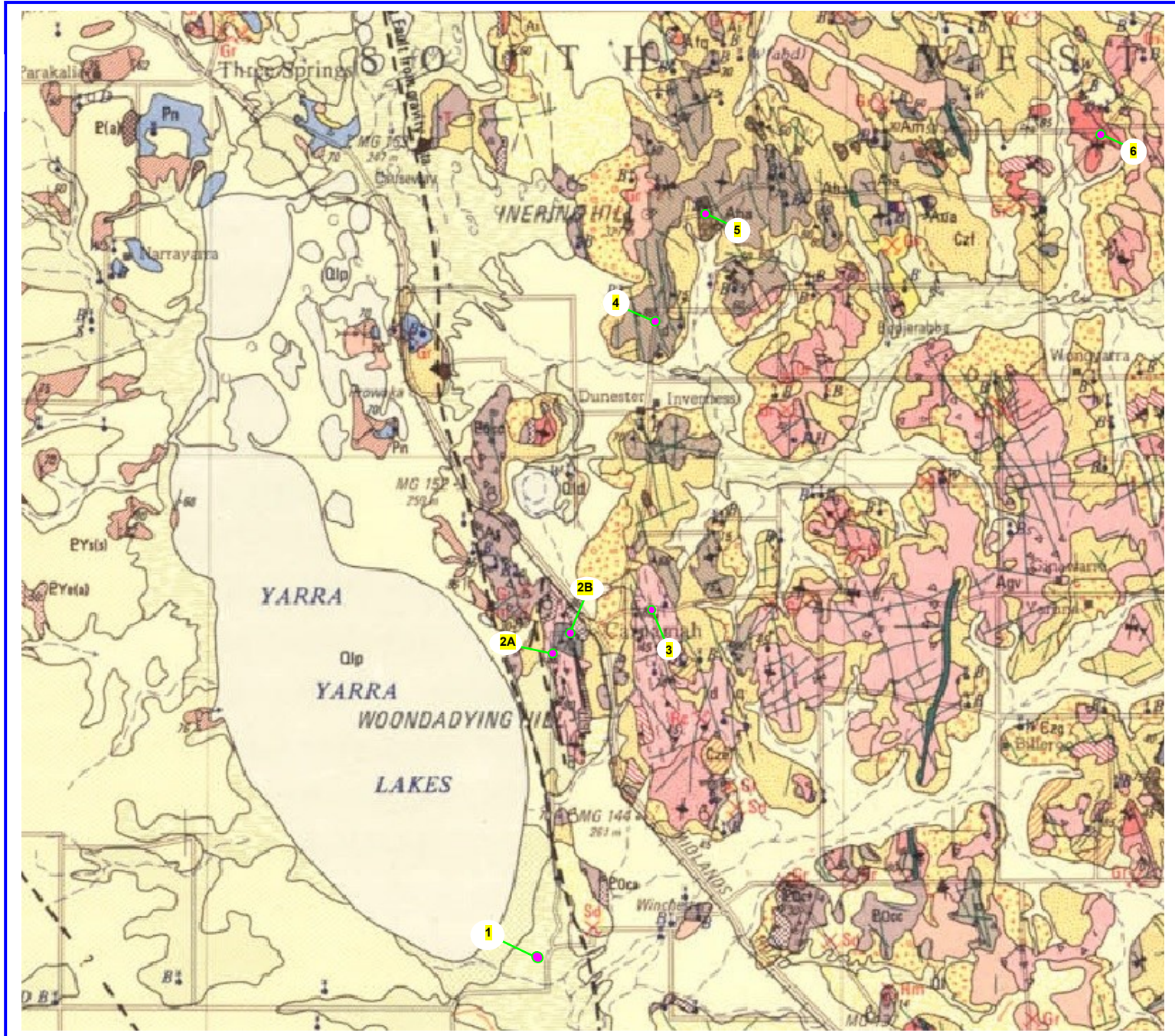
Geraldton area

→ 4 Geological Maps joined together :

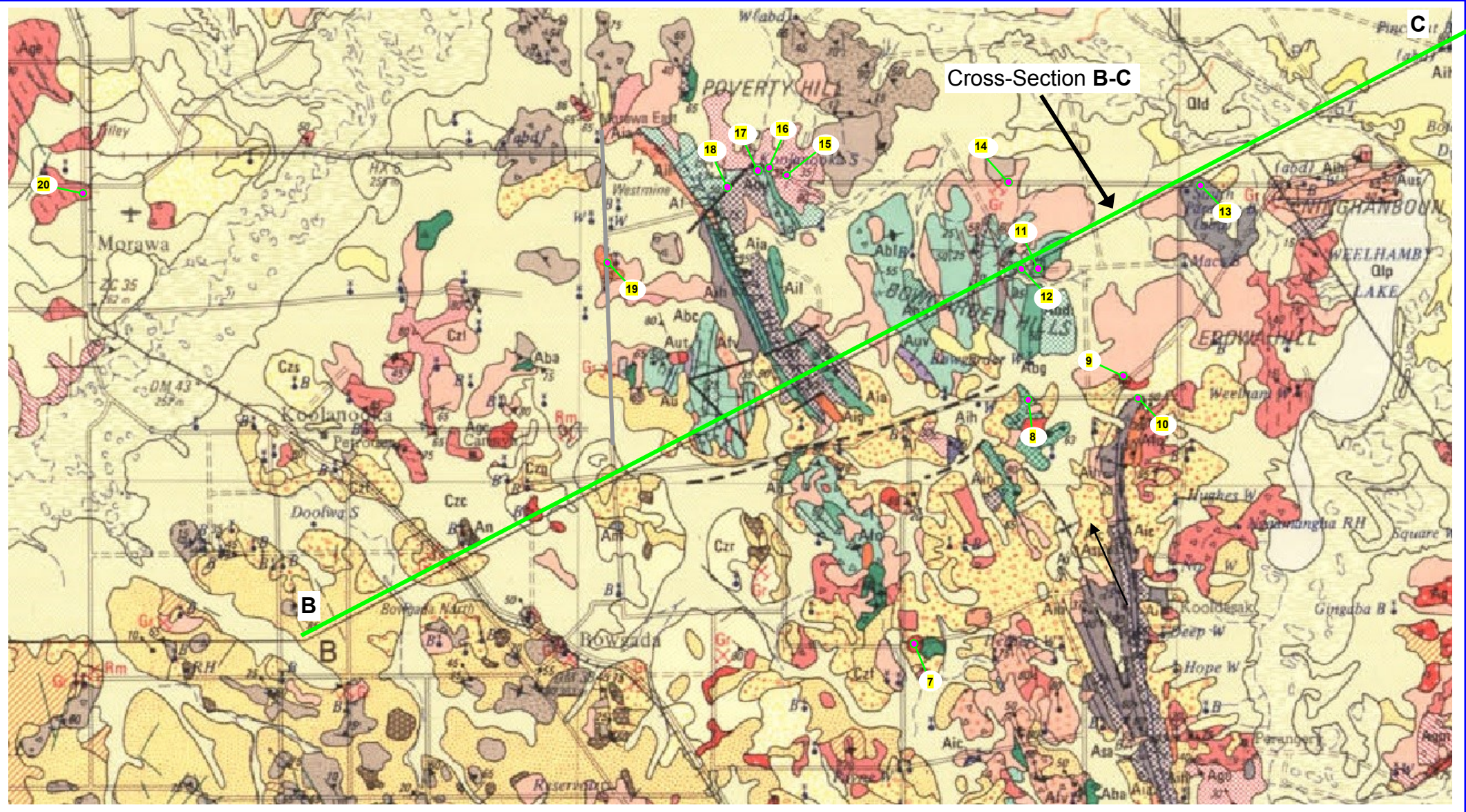


Detail 1

Sample sites No : 1 to 37
marked in yellow on the maps



Detail 2



Cross-Section B-C

B

C

7

8

9

11

14

15

16

17

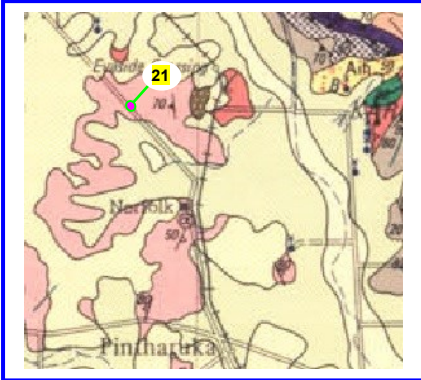
18

19

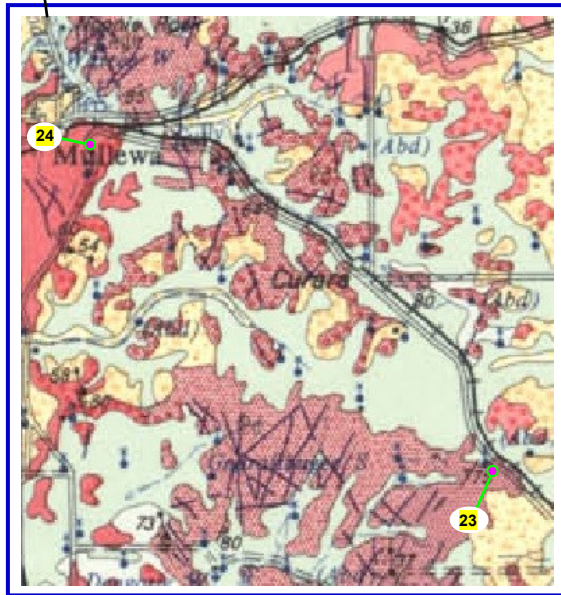
20

Sample sites No : 1 to 37
marked in yellow on the maps

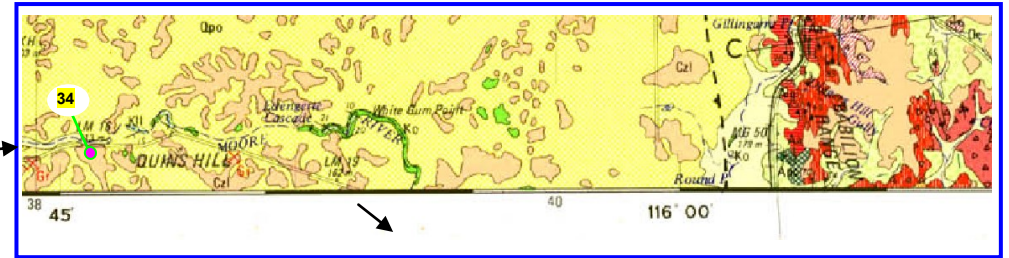
Detail 3



Detail 5



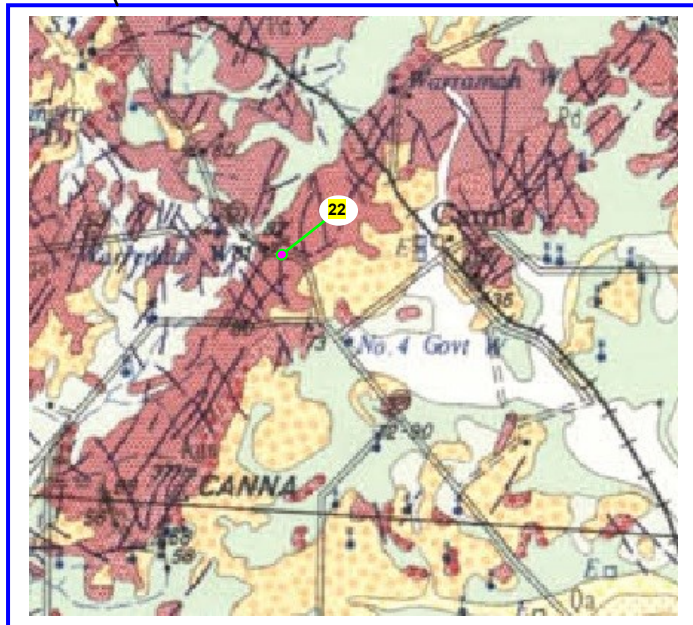
Detail 8



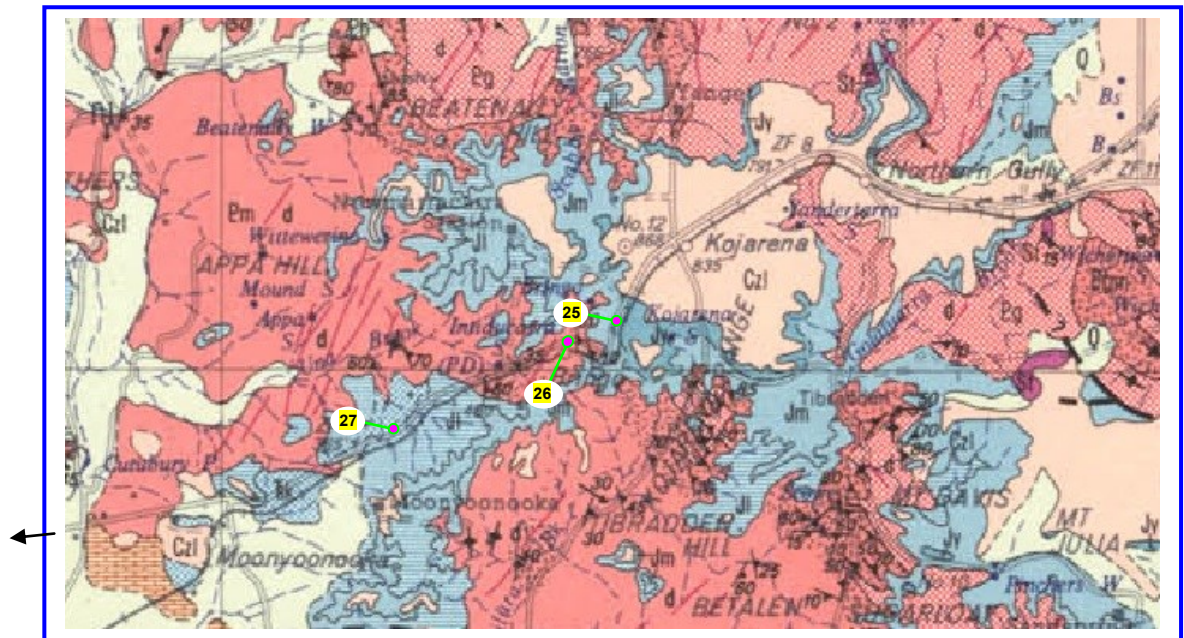
Detail 9



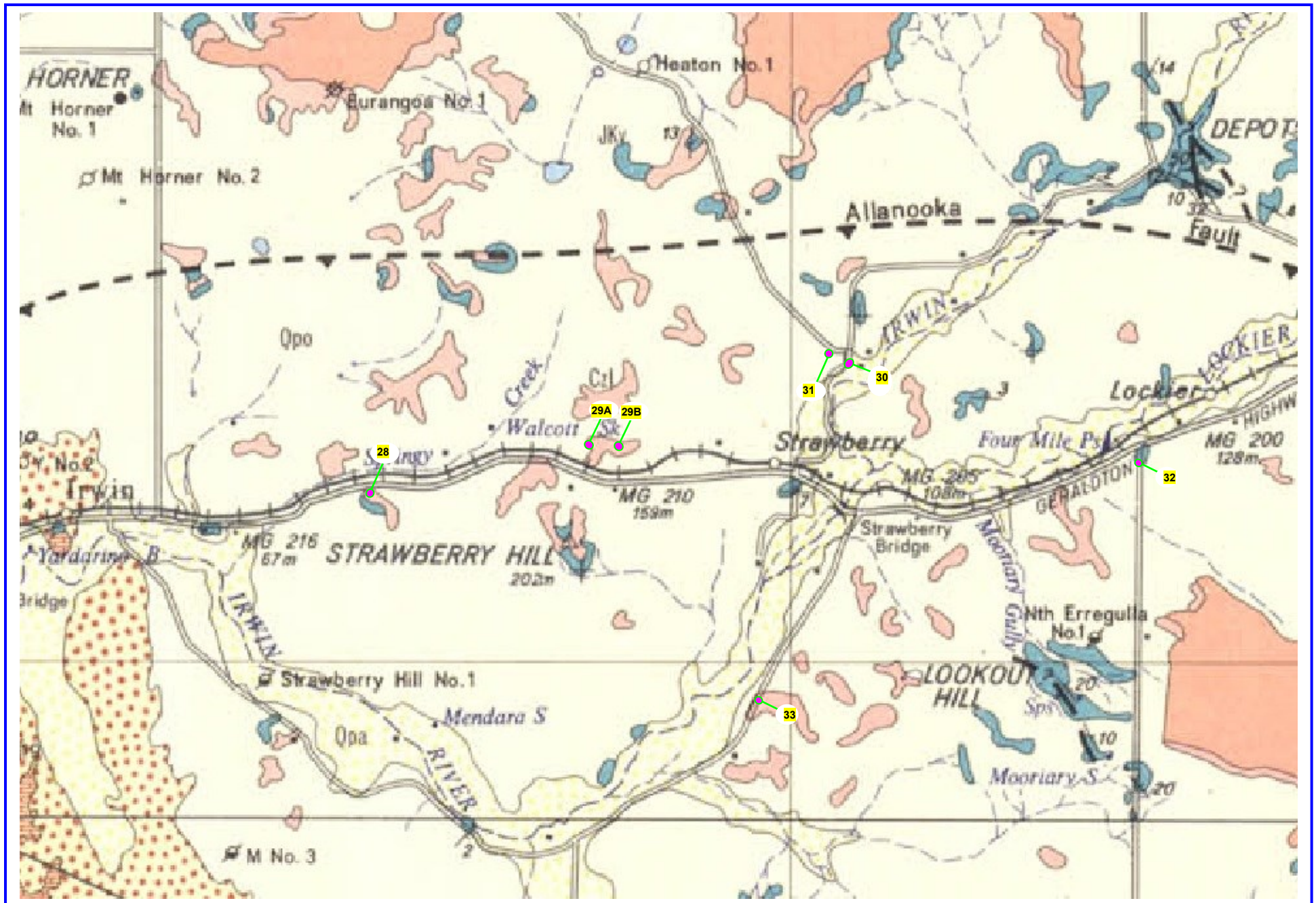
Detail 4



Detail 6

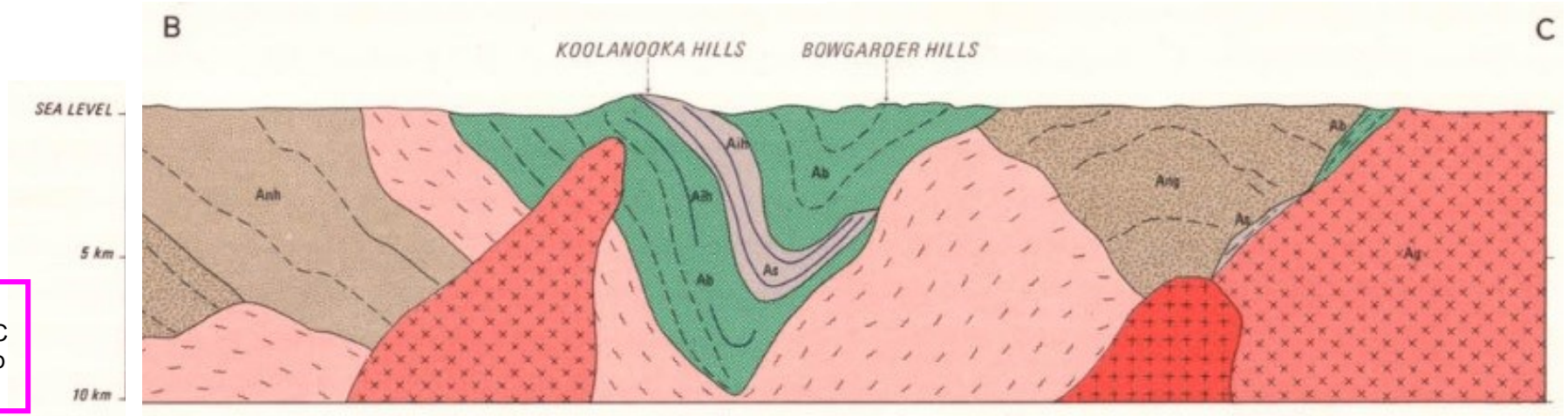


Detail 7



Geological Map : Perenjori_sh5006

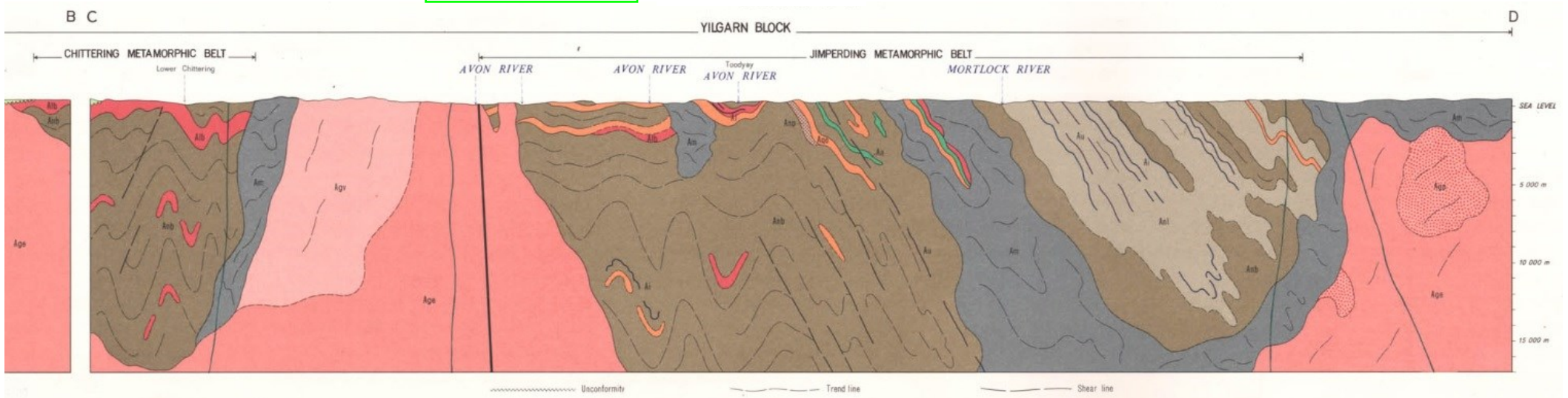
Cross-Section B-C



Also have a look at the cross-section A-C in the geological map Yalgoo_sh5002 !

Geological Map : Perth_sh5014

Cross-Section C-D



Geological Map : Geraldton_sh5001

Cross-Section A-D

